



## PLANNING THE FUTURE OF INTEGRATED HEALTHCARE

# We Need Your *Input!*

## Tribal Forum

# Purpose

---

## *Integration*

- Released RFI on 1/24/2017 - received 21 formal responses;
- Held 10+ community forums – received 80 survey responses;
- Tribal Consultation on 07/27/2017

*Share your thoughts for shaping  
AZ's healthcare future!*

# Process

---

We are using a *Give-Get-Record* strategy to elicit and gather your suggestions:

1. AHCCCS facilitators *Give* information and pose questions for the Audience.
2. Audience discusses, asks questions shares ideas.
3. Dedicated scribes *Get and Record* your input.

# Things To Keep In Mind

---

1. Covered services WILL NOT change!
2. The RFP seeks companies that manage health plans – not individual service providers.
3. Your comments help in shaping the new system.

# What We Seek

---

*We want to know what is important to you.*



Lets Get Started!



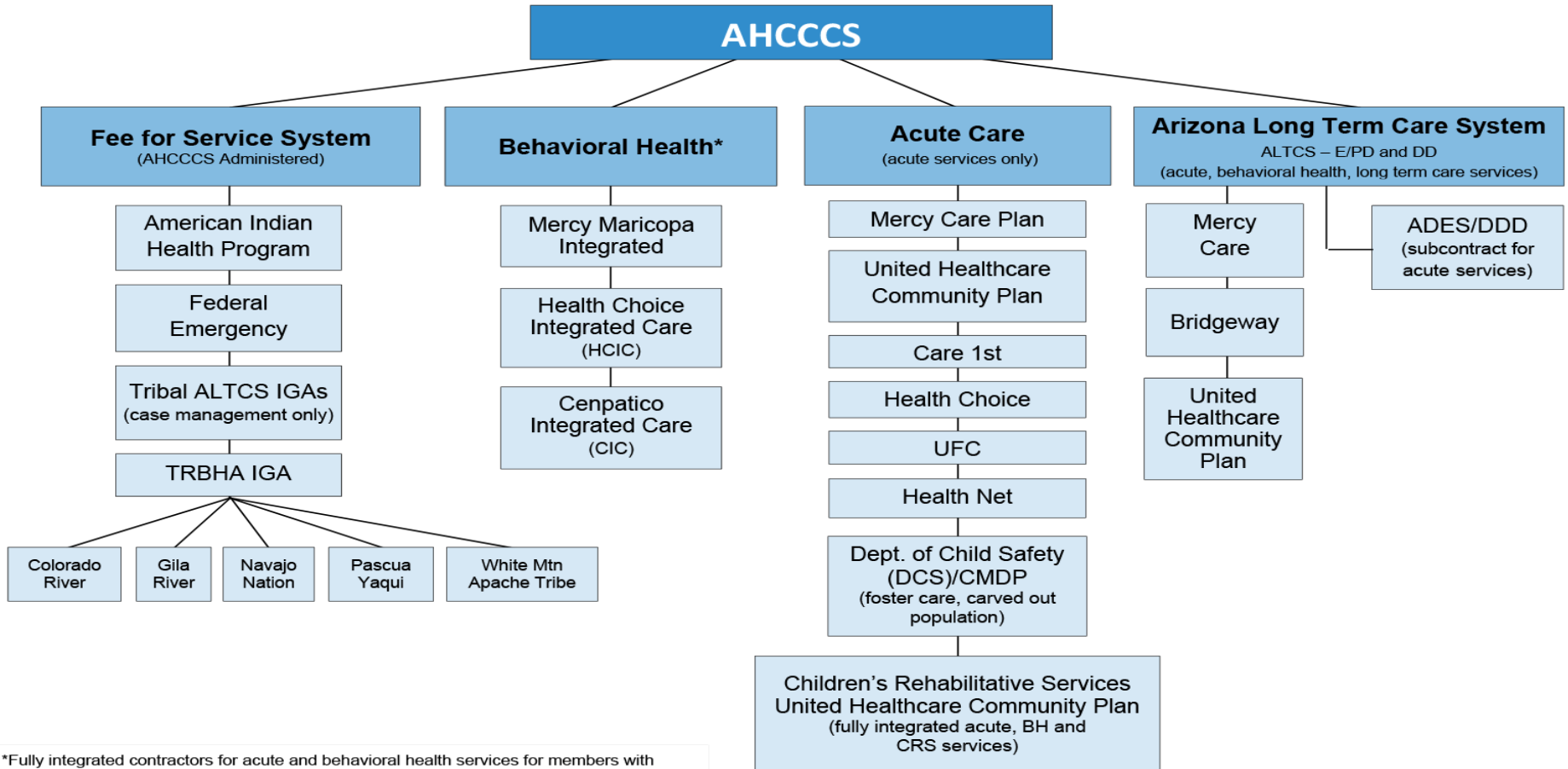
# What Is Integrated Healthcare?

For Members it means that you will choose a single **healthcare plan** that will:

- Include physical and behavioral healthcare service providers;
- Manage the provider network for all of your healthcare services; FFS “Network”
- Be the single payer to providers for the services that you receive.



# Care Delivery System



\*Fully integrated contractors for acute and behavioral health services for members with serious mental illness (SMI) and carved out behavioral health services for Acute Care/DD adults with general mental health and substance abuse needs (GMH/SA) and children.

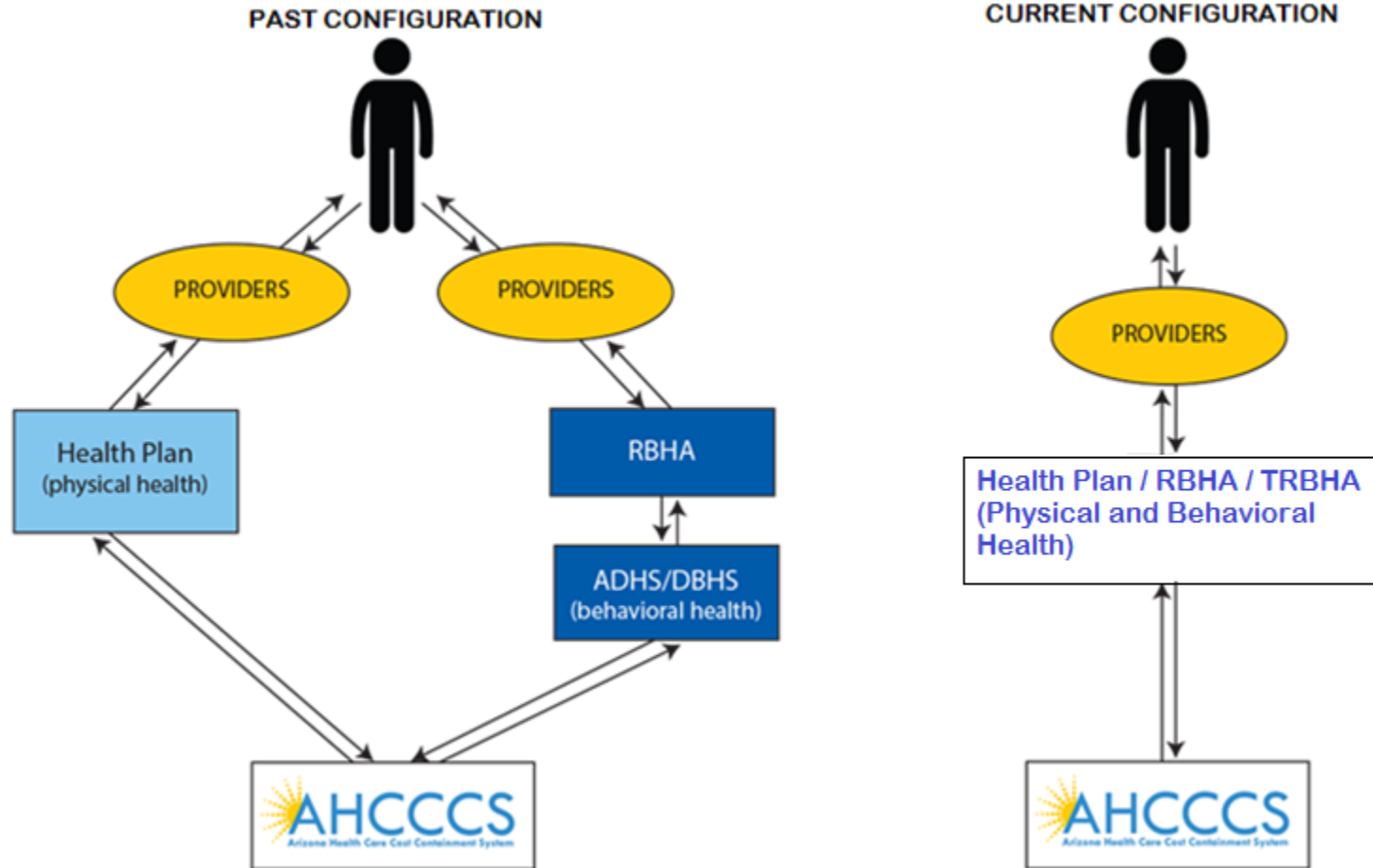


# The Benefits of Integration

---

- One Plan
- One Payer
- Easier to Navigate
- Streamline care coordination to get better outcomes
- Improve a person's whole health

# Vision - Integration at all 3 Levels



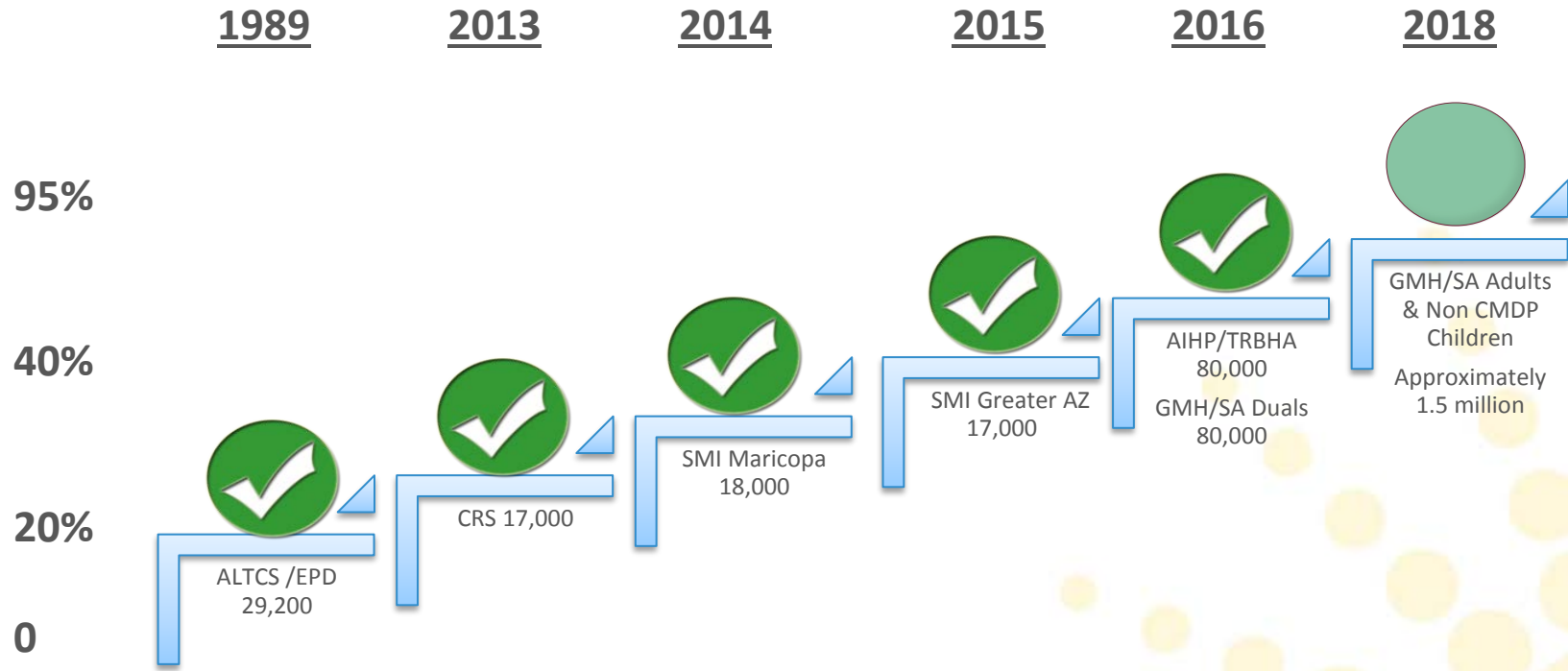
Reaching across Arizona to provide comprehensive quality health care for those in need

# Who Does This Affect and When?

Adults and Children on AHCCCS **Except**:

- Foster care Children enrolled with Comprehensive Medical Dental Program (CMDP);
- ALTCS; and
- Adults with a serious mental illness (SMI)
- Start date is 10/1/2018.

# Integration Progress To Date



# Supporting Choice for American Indian Members

---

- Integrated choices for the **Non SMI** populations will be available within:
  - Fee-for-Service (AIHP) or (AIHP/TRBHA); *and*
  - Managed Care (Integrated Contractors)
  - AI members will still be able to access services from an IHS/638 facility at anytime regardless of enrollment

# Enrollment for GMH/SA and Children Populations

Current Health Plan Enrollment/Assignment	Enrollment on 10/1/2018
CRS (acute and CRS services), TRBHA	Integrated Contractor
AIHP, CRS (CRS services only) and TRBHA	AIHP and TRBHA
AIHP, CRS and RBHA	AIHP
AIHP and TRBHA	AIHP and TRBHA – No Change
AIHP and RBHA	AIHP
Acute MCO and TRBHA	Integrated Contractor
Acute MCO and RBHA	Integrated Contractor
CMDP and TRBHA	CMDP and TRBHA- No Change
<u>DDD and TRBHA</u>	DDD and TRBHA-No Change

# Integrated Contractor – Major Decisions

---

Services for Members with Children's Rehabilitative Services (CRS) Qualifying Conditions:

- Members will continue with integrated contractor or Fee-for-Service
- Members determined to have a serious mental illness will transition to the integrated regional behavioral health authority (RBHA) or remain AIHP/RBHA or AIHP/TRBHA); and
- Members enrolled with Comprehensive Medical and Dental Program (CMDP) will continue with CMDP.

# Integrated Contractor – Major Decisions

---

Services for Members with Children's Rehabilitative Services (CRS) Designation and Long Term Care for Persons with Developmental Disabilities:

- Will be transitioned to DES/DDD for both physical and behavioral health services

*Contingent on decisions made regarding DES/DDD  
Integrated Contractor Request for Proposal.*



# Integrated Contractor – Major Decisions

---

Unique RBHA *Services (no change at this time)*:

- RBHA service areas do not change on 10/1/2018;
- RBHAs will continue to service foster children enrolled in CMDP;
- Individuals determined to have a serious mental illness (SMI) continue integrated services with the RBHA- no change;
- Crisis services will still be with the RBHA; and
- Grant funded and state-only funded services will continue with the RBHA.

# Integrated Contractor – Major Decisions

---

Multi-Specialty Interdisciplinary Clinic (MSIC)  
Network Requirements:

- Contractors must contract with MSIC.

*For further details, please see: [Bit.ly/integratedhealthcare](https://bit.ly/integratedhealthcare)*

# Integrated Contractor – Major Decisions

- Crisis services will continue to be served by the RBHAs with the existing RBHA geographic service areas unchanged on 10/1/18.
- The geographic structure for integrated contractors (*not including RBHAs*) will be align with the service areas established for the ALTCS contract beginning on 10/1/17 (*table on right*):

## GSA Name and Corresponding Counties

### North GSA

Mohave/Coconino/Apache/Navajo/Yavapai  
(excluding zip codes 85542, 85192, and 85550)

### South GSA

Cochise/Graham/Greenlee/  
La Paz/Pima/Santa Cruz/Yuma  
(including zip codes 85542, 85192, and 85550)

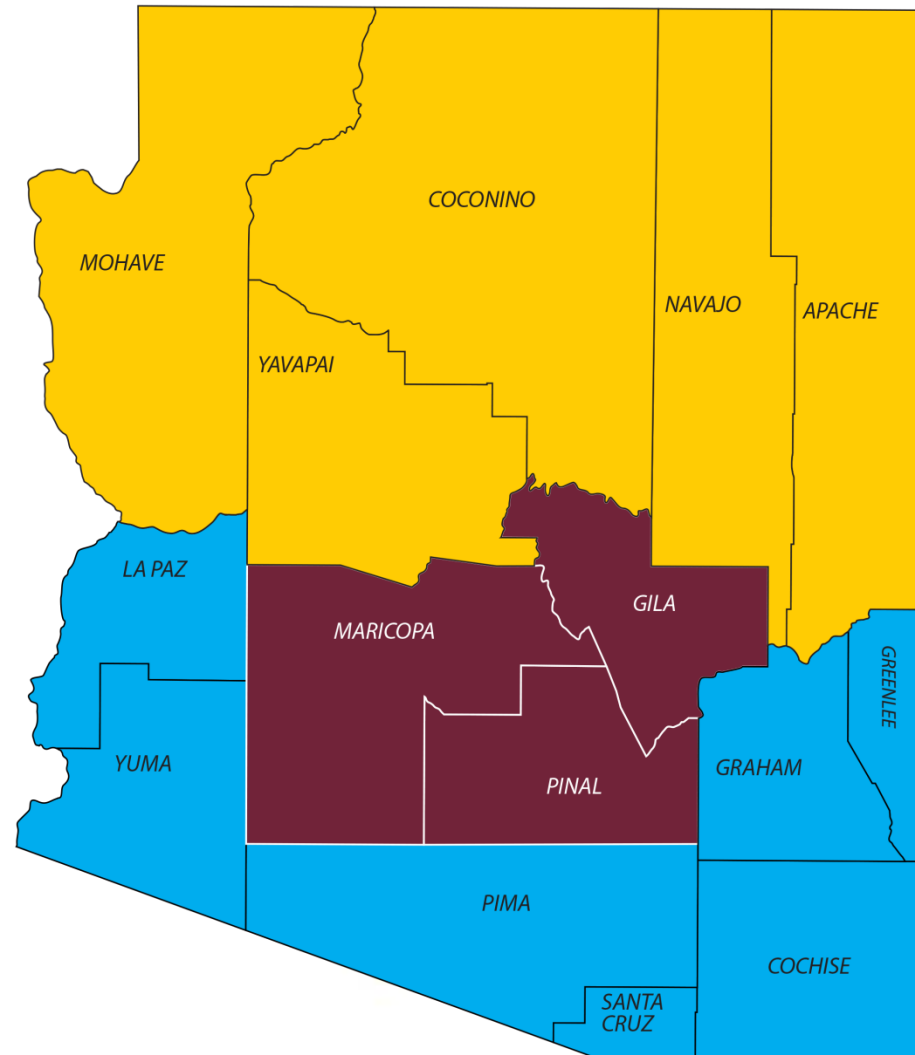
### Central GSA

Maricopa/Gila/Pinal

# Integrated Contractor Geographic Service Areas

Additional zip code exceptions may be considered to allow for further alignment with certain tribal lands.

FFS covers the entire state



# Integrated Contractor – Major Decisions

---

Number of Successful Offerors to be awarded with each GSA:

- a) **Central GSA:** At least 4 Contractors awarded;
- b) **South GSA:** Two Contractors awarded entire GSA & at least one additional Contractor awarded for Pima County Only; and
- c) **North GSA:** Two Contractors awarded.

*AHCCCS does not intend to award contracts for all GSAs to a single Offeror. RBHAs have option to expand services to include physical health for those who choose to remain with the RBHA.*

# Integrated Contractor-Major Decisions

---

- Adult Members (non SMI) and Children Members (non CMDP) previously receiving a determined amount of services with a RBHA will have a one time choice 10/1/18 to elect to stay with the RBHA (if that RBHA elects to expand its services to become an Integrated Contractor) instead of selecting one of the new plans.
- Tribal members will continue same frequency of choice option.
- Annual Enrollment options continue

# Integrated Contractor-Major Decisions

---

- If a RBHA that holds a current contract with AHCCCS or an affiliated organization of the RBHA is a successful bidder on the Integrated Contract, it will be required to have a single product (legal entity and brand) for both the Integrated Contract and the RBHA Contract.

# Future Integration Efforts for Foster Children Enrolled with CMDP

---

- AHCCCS is partnering with the Department of Children Safety (DCS) to identify future integration opportunities;
- Integration target date of Behavioral Health Services for CMDP members is 10/1/2019;
- In 2017, an analysis will be conducted to assess infrastructure needs for DCS to take on oversight of BH Services in CMDP.



# Future Expansion of Service Provisions for Members with SMI and Grant Funded Services

- Once RBHA contracts expire, successfully awarded Integrated Contractors may have the opportunity to compete for expansion of services to include members with SMI and Non TXIX/XXI (non AHCCCS eligible members).
- A limited number of integrated contracts will be permitted to expand these services in each GSA.

# AHCCCS Resource Page

---

## Posting information and resources that include:

- Schedule of Community Forum Events;
- The Request for Information (RFI) Released in January 2017;
- Solicitation Amendment 1 – Responses to Submitted Questions;
- Appendix - Service Utilization Data;
- Request for Proposal Community Survey; and  
Forum Presentations: [Bit.ly/integratedhealthcare](http://Bit.ly/integratedhealthcare)

# AHCCCS Resource Page

## **Choice for American Indian Members**

- AHCCCS hosting specific tribal forums
- Southern-Sept. 8, 2017- San Xavier Health Center
- Individual meetings as requested

*For more information: [Bit.ly/integratedhealthcare](http://Bit.ly/integratedhealthcare)*

Thank you!

